

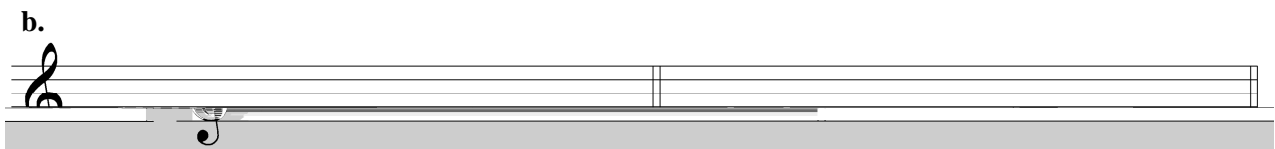
1. Write an B \flat major scale using accidentals (no key signature). Label the whole and half steps.



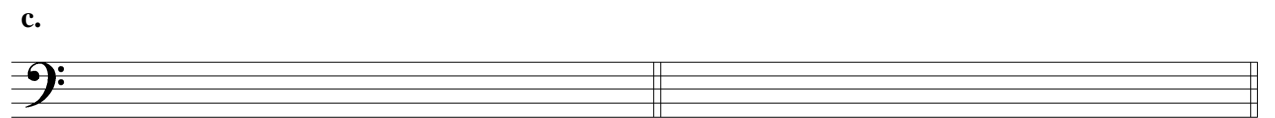
2. Write the requested scales using accidentals and using a correct key signature.



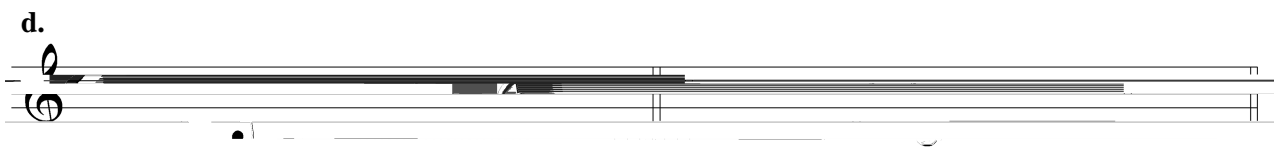
E maj:



E \flat maj:

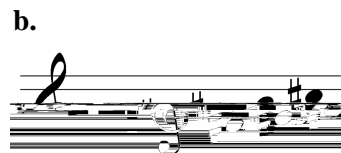
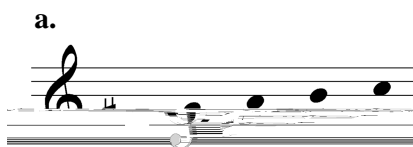


A maj:



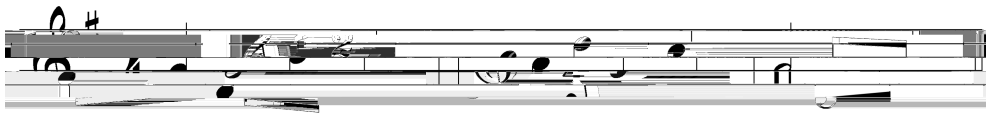
D \flat maj:

3. Identify the major scales that the following fragments could be a part of. There might be more than one right answer.



4. Sometimes key signatures do not match the actual key of the music. Rewrite the melody so that it sounds exactly the same as the original. Use accidentals as necessary to make the pitches sound correctly in the key. Play both melodies on a piano. They should sound exactly alike.

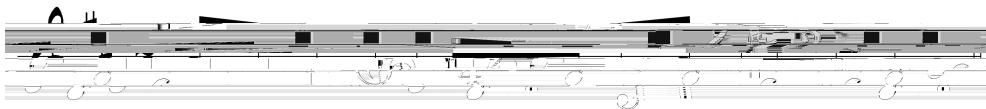
Example:



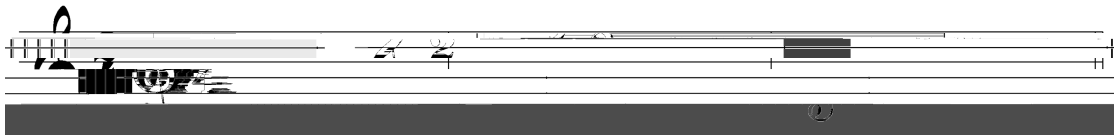
G maj:



G maj:



D maj:



D maj:



D maj:

5. Identify the key of the melody. Remember, key is based on what pitches are used and how the music would *sound*, not on what key signature is used.

a.



key: _____

b.



key: _____